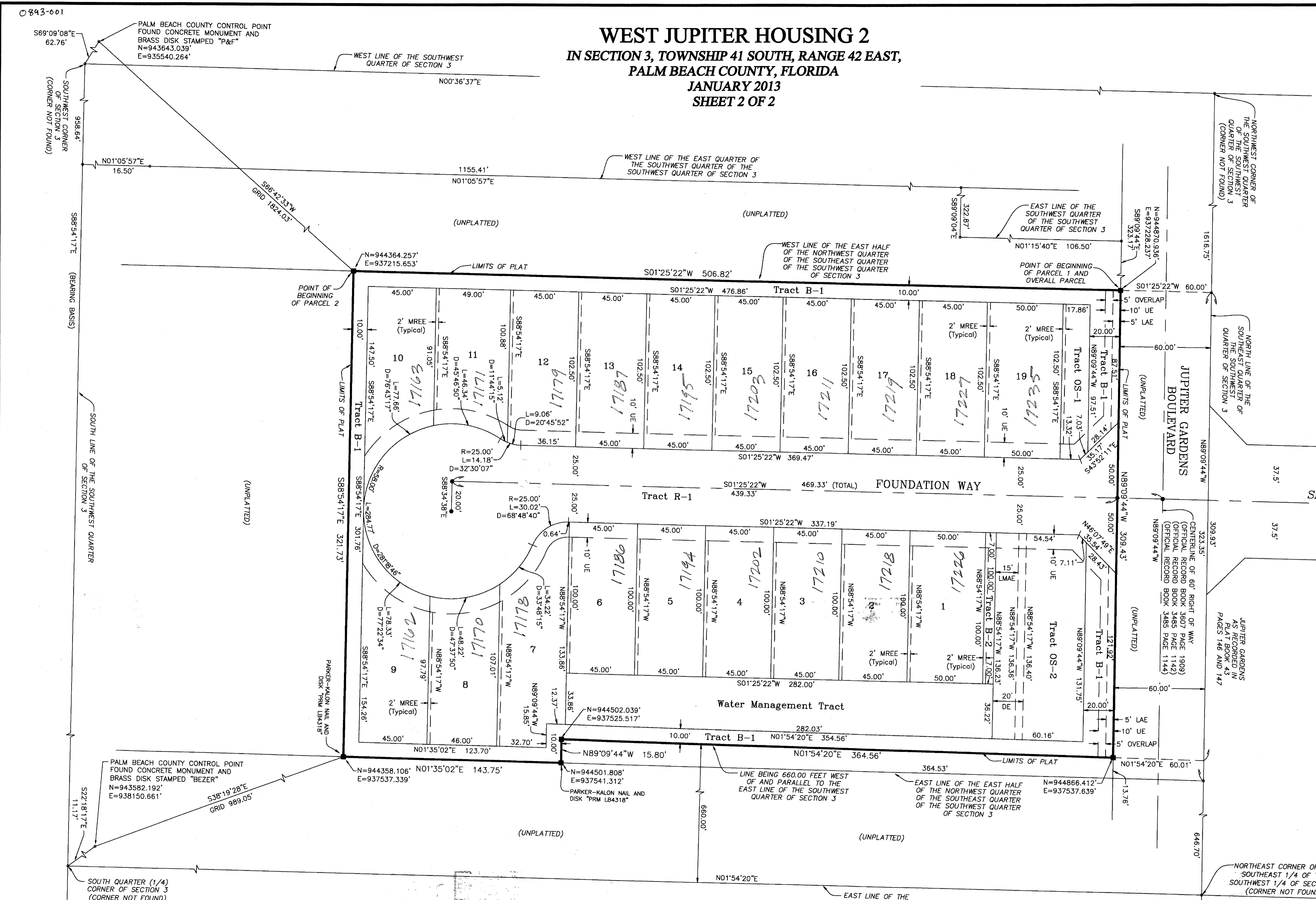


75

**WEST JUPITER HOUSING 2**  
 IN SECTION 3, TOWNSHIP 41 SOUTH, RANGE 42 EAST,  
 PALM BEACH COUNTY, FLORIDA  
 JANUARY 2013  
 SHEET 2 OF 2



**SURVEYOR'S NOTE:**

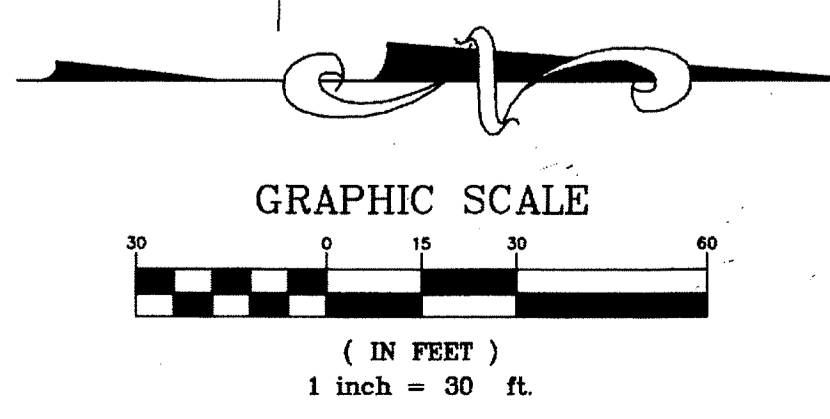
1. PLAT POSITION AND ORIENTATION  
 COORDINATES SHOWN ARE GRID  
 DATUM = NORTH AMERICAN DATUM (NAD) OF 1983, 1990 ADJUSTMENT  
 ZONE = FLORIDA EAST  
 LINEAR UNIT = U.S. SURVEY FOOT  
 COORDINATE SYSTEM = 1983 STATE PLANE TRANSVERSE MERCATOR PROJECTION  
 ALL DISTANCES SHOWN ARE GROUND DISTANCES  
 SCALE FACTOR = 1.00003150  
 GROUND DISTANCE X SCALE FACTOR = GRID DISTANCE  
 POSITIONAL ACCURACY EXCEEDS A 1:10,000 MINIMUM RELATIVE DISTANCE ACCURACY

**LEGEND:**

D = DELTA (CENTRAL ANGLE)  
 L = LENGTH  
 R = RADIUS  
 CB = CHORD BEARING  
 CD = CHORD DISTANCE  
 LAE = LIMITED ACCESS EASEMENT  
 LMAE = LAKE MAINTENANCE ACCESS EASEMENT  
 MREE = MAINTENANCE ROOF AND EAVES EASEMENT  
 UE = UTILITY EASEMENT  
 DE = DRAINAGE EASEMENT  
 R.O.W. = RIGHT OF WAY  
 N = NOTHING  
 E = EASTING  
 OS = OPEN SPACE

(R) = RADIAL  
 (NR) = NON-RADIAL  
 PB = PLAT BOOK  
 ORB = OFFICIAL RECORD BOOK  
 PG = PAGE  
 PSM = PROFESSIONAL SURVEYOR AND MAPPER

■ = PERMANENT REFERENCE MONUMENT  
 4"x4" CONCRETE MONUMENT WITH ALUMINUM DISK "PRM LB 4318" (UNLESS OTHERWISE NOTED)  
 ● = PERMANENT CONTROL POINT  
 PARKER-KALON NAIL & DISK "PCP LB 4980" (UNLESS OTHERWISE NOTED)



<b>WEST JUPITER HOUSING 2</b>	
SHEET NO. <b>2 OF 2</b>	SCALE: 1" = 30' DATE: JANUARY 2013 JOB NO. KE PHASE II FILE: KE PHASE II.DWG
 <b>CYPRESS LAND SURVEY, INC.</b> 702 AVENUE "A", N.W. WINTER HAVEN, FLORIDA 33881-3139 Phone (863) 299-8165 Fax (863) 294-4301 Florida License # I.B. 4980	